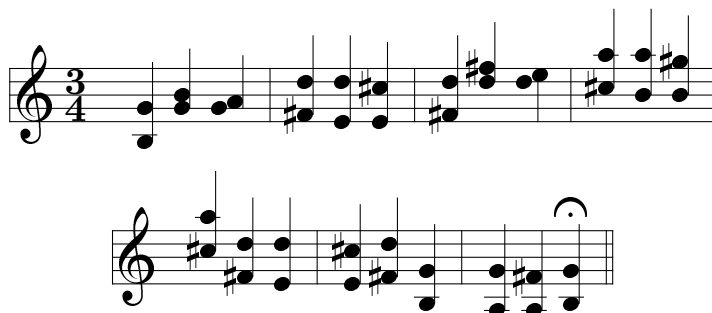


Violinvariationen von Andreas Ernst

Thema



1. Variation

Pizzicato oder Spiccato



2. Variation

Martelé



3. Variation

Spiccato

Musical notation for Variation 3, Spiccato. The notation is in treble clef, 9/8 time signature, and one sharp (F#). It consists of three staves of music. The first staff contains the first two measures, the second staff contains the next two measures, and the third staff contains the final two measures, ending with a double bar line and a fermata over the final note.

4. Variation

Tenuto

Musical notation for Variation 4, Tenuto. The notation is in treble clef, 6/8 time signature, and one sharp (F#). It consists of two staves of music. The first staff contains the first two measures, and the second staff contains the next two measures, ending with a double bar line and a fermata over the final note.

5. Variation

Sechzehntel legato

Musical notation for Variation 5, consisting of four staves of music. The first staff begins with the instruction "Sechzehntel legato" and a slur over the first sixteenth notes. The music is written in treble clef with a 6/8 time signature. The melody consists of sixteenth notes, some beamed together, and includes a final measure with a fermata.

6. Variation

Martelé

Musical notation for Variation 6, consisting of two staves of music. The first staff begins with the instruction "Martelé" and features a series of sixteenth notes with stems pointing downwards, characteristic of a martelé articulation. The music is written in treble clef with a 6/8 time signature. The melody consists of sixteenth notes, some beamed together, and includes a final measure with a fermata.

7. Variation

Tenuto

The musical score for Variation 7 is written in 9/8 time and consists of four staves. The first staff begins with a 'Tenuto' marking and contains a series of eighth and sixteenth notes, some beamed together. The second and third staves continue the melodic line with various rhythmic values and accidentals. The fourth staff concludes the variation with a final note marked with a fermata.

Schema: Für Violine solo.